

# MAGINON



## Instruction Manual IP Security Camera

with built in microphone



### CONTENTS

- IP Security Camera
- AC adaptor
- Wall bracket
- Network cable
- Alarm connection terminal
- Software CD
- Instruction manual
- Warranty certificate

### AFTER SALES SUPPORT

W<sup>2</sup>



AUS

1800 623 432

MODEL: IPC-100AC RODUCT CODE: 91838 12/2014

3

YEAR WARRANTY

# MAGINON

## IP Security Camera

### Warranty Details

---

The product is guaranteed to be free from defects in workmanship and parts for a period of 36 months from the date of purchase. Defects that occur within this warranty period, under normal use and care, will be repaired, replaced or refunded at our discretion.

The benefits conferred by this warranty are in addition to all rights and remedies in respect of the product that the consumer has under the Competition and Consumer Act 2010 and similar state and territory laws.

Our goods come with guarantees that cannot be excluded under the Australian Consumer Law. You are entitled to a replacement or refund for a major failure and for compensation for any other reasonably foreseeable loss or damage. You are also entitled to have the goods repaired or replaced if the goods fail to be of acceptable quality and the failure does not amount to a major failure.

---

#### AFTER SALES SUPPORT

  1800 623 432

MODEL: IPC-100 AC

PRODUCT CODE: 91838

12/2014



Dear customer,

Congratulations on purchasing a high quality MAGINON product.

You have chosen a modern IP Security Camera with excellent technical equipment and respective accessory, which is particularly easy to operate. Please study all notices carefully and diligently.

Please study this information in detail observing, in particular, the safety instructions.

The device comes with a 3 year warranty.

In case of a defect in the IP Security Camera you require the enclosed warranty card and proof of purchase.

Keep these in a safe place together with the Instruction Manual.

Please include the Instruction Manual when passing the camera on to a third party.

## 1. Contents of box

Carefully unpack the IP Security Camera and check that all parts listed below are present:

1. MAGINON IP Security Camera IPC-100 AC
2. AC adaptor
3. Wall bracket incl. assembly material
4. Network cable
5. Alarm connection terminal
6. Software CD
7. Warranty certificate
8. Instruction manual



### Note:

- Caution! Keep plastic foil and bags away from babies and small children as danger of suffocation.

### AFTER SALES SUPPORT

  1800 623 432

MODEL: IPC-100 AC

PRODUCT CODE: 91838

12/2014

# 3

YEAR WARRANTY

## User data supplied with camera

**Note:**

- Please make sure that when first using the IP Security Camera to create a password for the user account "admin"!

User name: **admin**

Password: there is no default password!

New password: \_\_\_\_\_

## 2. Contents

|    |   |    |
|----|---|----|
| 1. | CONTENTS OF BOX.....                          | 1  |
| 2. | CONTENTS.....                                 | 2  |
| 3. | HAZARD, SAFETY AND WARNING NOTICES.....       | 4  |
| 4. | PREPARATION.....                              | 6  |
|    | 4.1. Part names.....                          | 6  |
|    | 4.2. Views of IP Security Camera.....         | 7  |
|    | 4.3. Assembly of IP Security Camera.....      | 8  |
| 5. | INSTALLATION OF IP SECURITY CAMERA.....       | 9  |
|    | 5.1. Hardware installation.....               | 9  |
|    | 5.2. System requirements.....                 | 10 |
|    | 5.3. Software installation.....               | 10 |
|    | 5.4. Cloud installation "supra space".....    | 11 |
|    | 5.5. Manual set up of IP Security Camera..... | 16 |
|    | 5.6. Setting up the router.....               | 20 |
|    | 5.7. Setting up the domain name.....          | 23 |
|    | 5.8. Setting up an app.....                   | 24 |
|    | 5.9. Installation on Mac OS X.....            | 25 |
|    | 5.10. Installation tips.....                  | 28 |
| 6. | THE PROGRAM MAGINON IPCAM CONFIG.....         | 30 |

### AFTER SALES SUPPORT

1800 623 432

MODEL: IPC-100 AC

PRODUCT CODE: 91838

12/2014

**3**

YEAR WARRANTY

|   |           |
|---|-----------|
| <b>7. USE OF IP SECURITY CAMERA</b>     | <b>32</b> |
| 7.1. Activating the IP Security Camera  | 32        |
| 7.2. Controlling the IP Security Camera | 33        |
| <b>8. SETTINGS</b>                      | <b>36</b> |
| 8.1. Device status                      | 36        |
| 8.2. Camera name                        | 37        |
| 8.3. Date and time                      | 38        |
| 8.4. User account                       | 39        |
| 8.5. Network settings                   | 40        |
| 8.6. Wireless settings                  | 42        |
| 8.7. UPNP settings                      | 44        |
| 8.8. DDNS settings                      | 45        |
| 8.9. Mail settings                      | 47        |
| 8.10. FTP settings                      | 49        |
| 8.11. Alarm settings                    | 50        |
| 8.12. Camera head settings              | 53        |
| 8.13. Resetting                         | 54        |
| 8.14. Restarting the camera             | 54        |
| <b>9. POTENTIAL LEGAL INFRINGEMENTS</b> | <b>55</b> |
| <b>10. LICENSE DECLARATION</b>          | <b>56</b> |
| <b>11. CONFORMITY</b>                   | <b>57</b> |
| <b>12. DISPOSAL</b>                     | <b>57</b> |
| <b>13. WARRANTY AND SERVICE</b>         | <b>57</b> |
| <b>14. TECHNICAL SPECIFICATION</b>      | <b>58</b> |
| <b>15. INDEX</b>                        | <b>59</b> |

### 3. Hazard, safety and warning notices

Incorrect use of the IP Security Camera and accessories can be dangerous for you and others and can damage or destroy the IP Security Camera. We therefore ask you to read and strictly observe the following **Hazard, safety and warning notices**.

#### Intended use

- This IP Security Camera is solely designed for the surveillance of internal areas.
- It is your responsibility to ensure that you do not infringe any third party rights when using the camera.
- The IP Security Camera is only suitable for private and not for commercial use.

#### Hazards for children and persons with limited ability to operate electronic equipment

- **The camera, accessory and packaging are not toys for children.** These should therefore always be kept away from children. Danger of electrocution, poisoning and suffocation.
- The camera and its accessories may not be used by **children and persons with limited abilities**. This device is not designed to be used by persons (including children) with limited physical, sensory or mental capacity or lack of experience and/or know how.  
The camera and the power supply may only be used by persons, that are physically and mentally able to operate it safely unless they are supervised by a person responsible for their safety or are instructed in the use of the device by this person. Children should be supervised to ensure that they do not play with the device.

#### Electrocution hazard in wet and humid conditions

- Do not expose camera and its components to dripping or spraying water. Also do not place any containers filled with liquid, such as vases or glasses on top or immediately next to the device. Danger of fire and electrocution.
- Do not use the camera and its components near water and protect it against wetness and moisture. Danger of fire and electrocution.

#### Electrical hazard

- In case of **ingress of foreign bodies or liquid, switch off camera**. Let all parts dry thoroughly. Otherwise danger of fire or electrocution
- When the camera has been dropped or the **housing is damaged**, **switch off camera**. Otherwise danger of fire or electrocution
- The camera and its components **may not be taken apart, modified or repaired**. Danger of fire and electrocution.

---

#### AFTER SALES SUPPORT

  1800 623 432

MODEL: IPC-100 AC

PRODUCT CODE: 91838

12/2014

**3**

YEAR WARRANTY

- Only use the supplied power supply or a power supply with the same specifications. Only connect the power supply to a power supply corresponding with the ratings on the rating plate.
- Damaged power supplies or output cables may not be used. Replace it with a power supply of the same type.
- Ensure that all sockets used are always freely accessible so that the power supply can be quickly disconnected, when necessary. Disconnect from mains only by pulling out plug from mains socket.
- Ensure adequate ventilation and do not cover power supply to prevent overheating.
- The power supply may not be used during **athunderstorm**. Otherwise danger of electrocution.

## Damage from heat – fire hazard

- **Do not leave camera in places that are susceptible to considerable increases in temperature** (e.g. a vehicle). The housing and internal parts may be damaged, which in turn could cause a fire.
- **Do not wrap up camera or place on textiles**. This could produce a build up of heat in the camera that can cause deformation of the housing and may represent a fire hazard.

## Injuries and material damage

- When installing and assembling the camera ensure that a 10 cm gap is maintained on all sides in order to provide adequate ventilation. Ensure, in particular, that ventilation slots are not covered by newspaper, table clothes or curtains.
- **Never place open fire sources** on or near the camera.
- Damage to the electronics, lens or accessory caused by external influences **such as impacts, falls or others** are not covered by the warranty and are chargeable.

---

### AFTER SALES SUPPORT

  1800 623 432

MODEL: IPC-100 AC

PRODUCT CODE: 91838

12/2014



## 4. Preparation

### 4.1. Part names





1. MAGINON IP Security Camera IPC-100 AC
2. Wall bracket
3. Network cable
4. AC adaptor
5. Alarm connection terminal

Without illustration:

- Assembly material
- Software CD
- Instruction manual
- Warranty certificate

#### AFTER SALES SUPPORT

  1800 623 432

MODEL: IPC-100 AC

PRODUCT CODE: 91838

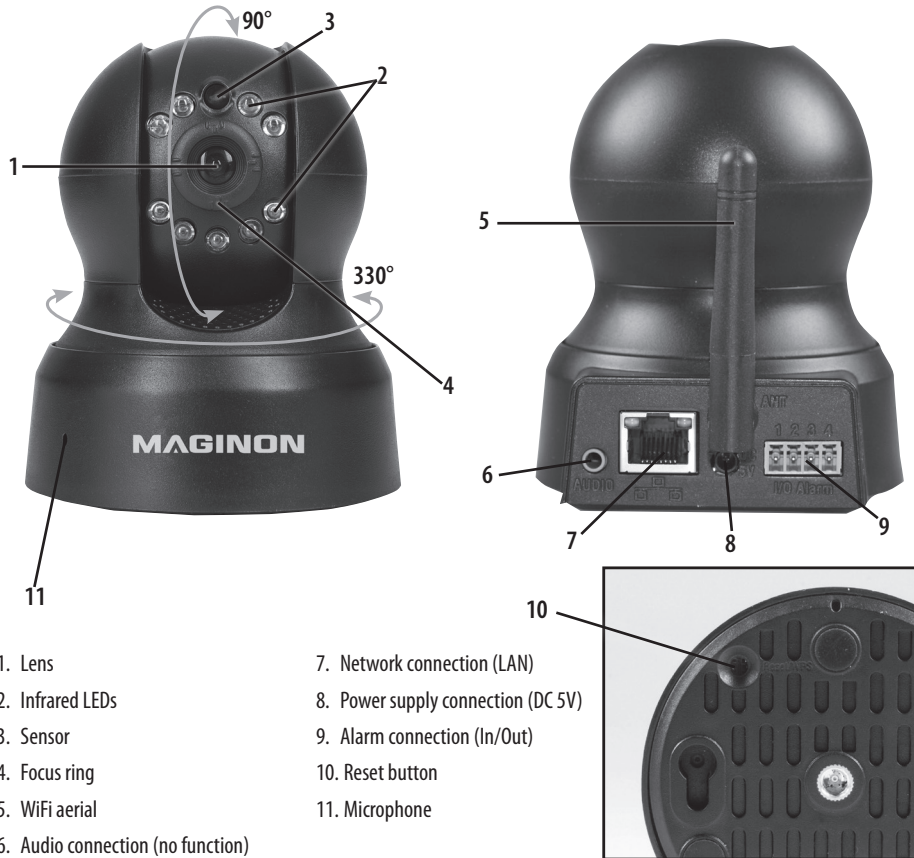
12/2014

**3**

YEAR WARRANTY



## 4.2. Views of IP Security Camera



- |                                   |                                    |
|-----------------------------------|------------------------------------|
| 1. Lens                           | 7. Network connection (LAN)        |
| 2. Infrared LEDs                  | 8. Power supply connection (DC 5V) |
| 3. Sensor                         | 9. Alarm connection (In/Out)       |
| 4. Focus ring                     | 10. Reset button                   |
| 5. WiFi aerial                    | 11. Microphone                     |
| 6. Audio connection (no function) |                                    |



### Note:

- The focus ring (4) allows setting of the camera focus.

### AFTER SALES SUPPORT

1800 623 432

MODEL: IPC-100 AC

PRODUCT CODE: 91838

12/2014

**3**

YEAR WARRANTY

### 4.3. Assembly of IP Security Camera

Using the supplied wall fixing, the IP Security Camera can be installed at a fixed location.



**Note:**

- Do not place IP Security Camera directly next to electronic devices as this could produce interference. In case of picture interference, test camera at another location.
- Select the installation site for the IP Security Camera so that the lens is not exposed to sun light.

#### 4.3.1. Install wall fixing

Hold the plate of the wall fixing containing holes against the surface of the selected installation site and mark the holes on the surface, using a pencil.

To drill suitable holes, use a 6 mm masonry drill for dowels in stone or concrete surfaces or a 3 mm wood drill for timber surfaces. After drilling the holes insert supplied wall plugs into holes so that they are flush with the surface. Secure wall fixings with supplied bolts.

#### 4.3.2. User data supplied with camera

Place the tripod socket of the IP Security Camera on the mounting plate of the wall bracket and screw the camera with the tripod screw. Align the IP Security Camera as desired.

#### 4.3.3. Complete camera assembly

Connect the supplied mains unit first into the IP Security Camera, then you can connect it into the socket.



#### AFTER SALES SUPPORT

1800 623 432

MODEL: IPC-100 AC

PRODUCT CODE: 91838

12/2014

**3**

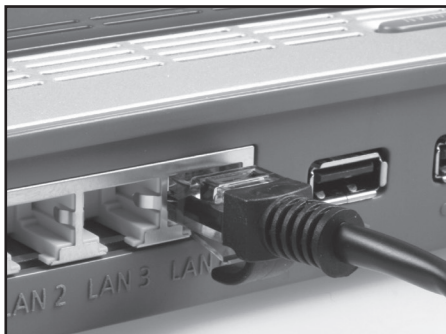
YEAR WARRANTY

## 5. Installation of IP Security Camera

### 5.1. Hardware installation

In order to carry out the first settings in the IP Security Camera, the network cable must be connected to the router. A wireless connection via WiFi is only available once this has been set up in the IP Security Camera using the cable connection.

Plug the supplied network cable into camera and router as shown in the illustrations.



The network connection of the IP Security Camera contains two control LEDs.

- **Yellow:** Indicates that network activity is taking place.
- **Green:** Indicates that the IP Security Camera is connected to a network.



#### Note:

- If your router does not contain a port for connecting the network cable, the IP Security Camera can also be set up without a router.
- For this purpose deactivate all networks existing on your computer and plug the network cable of the IP Security Camera directly into the computer. You can also access the IP Security Camera via the program *Maginon IPCam Config* (see section 5.4).

#### AFTER SALES SUPPORT

☎ (AUS) 1800 623 432

MODEL: IPC-100 AC

PRODUCT CODE: 91838

12/2014

**3**

YEAR WARRANTY

## 5.2. System requirements

Operating system: The software provided on the enclosed CD is only suitable for Windows operating systems. Using the browser access, the IP Security Camera can also be set up using Mac OS, Linux or other operating systems.

**Operating systems:** Windows 2000 (SP 4), Windows XP (SP 2), Vista, 7, 8

**Processor:** 2.0 GHz or higher

**RAM memory:** 512 MByte or higher

**Network card:** 10MBit/s or higher

**RAM memory:** 512 MByte or higher

**Internet browser:** Internet Explorer (from version 9), Firefox (from version 3), Google Chrome, Safari, Opera (latest version)

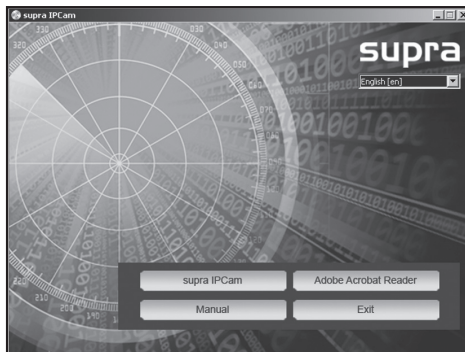
**Screen resolution:** 1024x768 or higher

## 5.3. Software installation

The supplied software is only suitable for Windows systems. For installation on Mac systems, please read section 5.9., *Installation on Mac OS X*.

The software must be installed on a computer connected to the same router as the IP Security Camera.

Place supplied software CD into CD/DVD drive of your computer. The below selection menu should then appear automatically. If the menu does not start automatically, select drives from your computer and open the CD/DVD drive named "Maginon IP Camera" by clicking on it with the mouse. Start program by double clicking on *CDMenu/CDMenu.exe*.



Click on "supra IPCam" to install the program *supra IPCam Config*. Follow on screen information until software installation is completed.

### AFTER SALES SUPPORT

  1800 623 432

MODEL: IPC-100 AC

PRODUCT CODE: 91838

12/2014

**3**

YEAR WARRANTY

Once installed, the program can be found under *All programs* and *supra IPCam Config*.

By clicking on the option "Operating Instructions" in the Start menu of the Software CD, the Operating Instructions can be opened on screen in the system language of the computer.

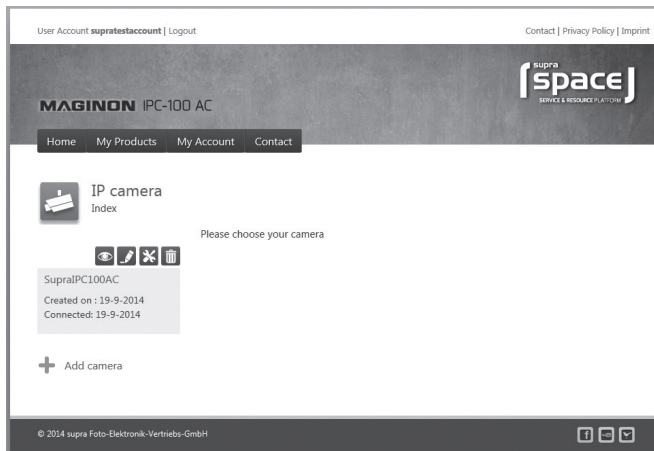
In the event of your computer not containing a suitable program to open pdf files, you can also install the program "Adobe Acrobat Reader".

## 5.4. Cloud installation "supra space"

Your Maginon IPC-100 AC has been set up for simple camera installation. For this purpose we have provided a cloud solution that can be quickly and easily set up. After installation you can at any time access the camera directly via the "supra space".

A cloud is a platform on the internet producing the connection between camera and your end device (computer, mobile, tablet PC). Only the connecting data required for the camera are stored at supra space but not camera images.

Below the few steps for setting up your Maginon IPC-100 AC for use via the cloud are explained.



### AFTER SALES SUPPORT

1800 623 432

MODEL: IPC-100 AC

PRODUCT CODE: 91838

12/2014

**3**

YEAR WARRANTY

### 5.4.1. Implement Setup assistant

1. In the program IPCam Config call up the Setup assistant under "Settings".
2. Select "Maginon IPC-100 AC" as camera model and click on "OK". This calls up the existing settings of the camera.
3. In order to set up the camera for use via supra space, select the third option "Camera with supra space during the next step (recommended)".

☐ Use camera in Internet  
The wizard sets up the camera name, wireless connection and a free domain. You can then use the camera in your home network and on the Internet.

☒ **Use camera with supra space (recommended).**  
**The wizard sets up the camera name, the wireless connection and supra space. With supra space you have fast and easy access to your camera from anywhere.**

4. Enter any name for the camera in the next window, describing, for instance, the location.
5. In the next step select Wireless network and set region to "Europe" and enter the key.

Please select your home network from the list of available wireless networks and enter the following code:

|  |
|--|
| sukona - WPA2 PSK (AES) - 34:A8:4E:57:13:B0    |
| sukona - WPA2 PSK (AES) - CD:7B:BC:F1:A6:F0    |
| TestFritz - WPA2 PSK (AES) - 08:96:D7:12:2C:7B |

Name of network:

Region:

Encryption:

Key:

☒ Do not change wireless settings at this point.

Back Continue Cancel

6. Now enter the registration data for logging on to supra space. Select any user name and a password consisting of at least 8 characters. Also enter a valid email address. Note down this log on information.
7. The last step repeats again the implemented settings.
8. Click on "Continue" to carry out the camera set up.

☒ I want to register with supra space as a new user:

User name:

Password:

Repeat password:

E-mail:

☐ I am already registered with supra space:

User name:

Password:

You can recover your user name or password in the Internet under [www.supra-space.de](http://www.supra-space.de).

Setup wizard - Checking

The entered settings can now be stored in the camera:

Name of camera: (do not change)

Wireless settings: sukona (change)

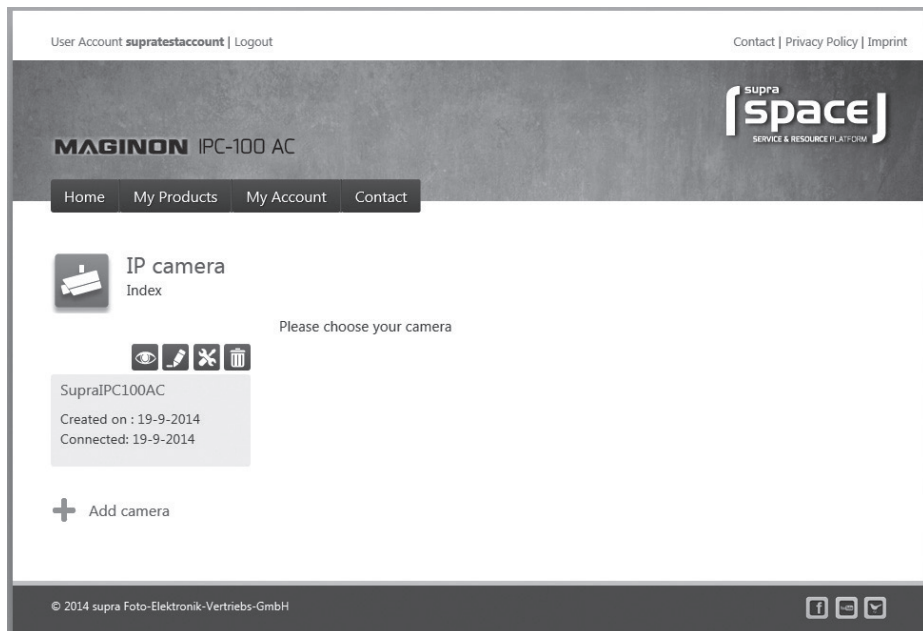
Domain name: (do not change)

Rollei Cloud: TestCam (change)

### 5.4.2 Select "supra space"

Next open the start page of supra space in the internet browser using link <http://supra-space.de> or <http://supra-space.com>.

Enter user name specified in the Set up assistant. The overview now lists all products of your IP camera. Select these to call up your camera. The following page then appears.



#### AFTER SALES SUPPORT

1800 623 432

MODEL: IPC-100 AC

PRODUCT CODE: 91838

12/2014

**3**

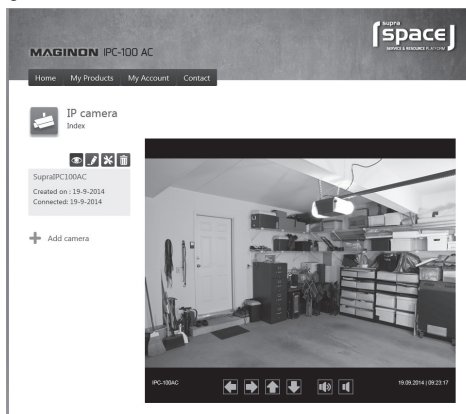
YEAR WARRANTY



## 5.4.3. Use camera via supra space


Select symbol  to call up the image of your Maginon IPC-100 AC.

Using  call up the Web surface of your camera. Log on with user name “admin” and without a password. You then have access to all settings of your Maginon IPC-100 AC.

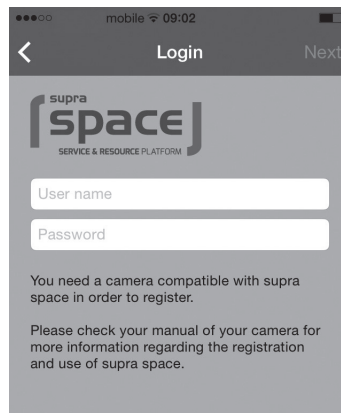


## 5.4.4. Use of the App

The App “Maginon IPC Viewer” is available for your camera from the App Store and from Google Play. Load the App onto a smartphone or a tablet PC and start App.

Use symbol  to log onto supra space. Use the log on information used in the Setup Assistant.

After logging on, the camera is immediately available from a list under the chosen camera name. Select it from the display in order to view the camera image.



## AFTER SALES SUPPORT

  1800 623 432

MODEL: IPC-100 AC

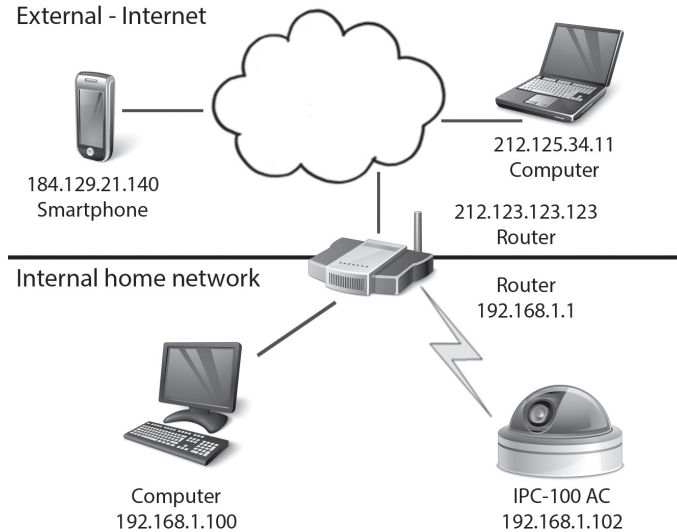
PRODUCT CODE: 91838

12/2014



## 5.5. Manual set up of IP Security Camera

In the subsequent graphics it is schematically shown how the IP Security Camera is integrated in your existing home network and how it is accessed from the internet.



The *router* is central to this operation. The router is the connection between your home network and the internet. The router is thus connected to two networks at the same time, the internet and your home network. The router is accessed via a different address ( *IP address* ) from each of the networks.

The IP Security Camera is directly connected to the router, either via a network cable or wireless via Wifi. This allows access to the IP Security Camera from the home network and the internet.

### AFTER SALES SUPPORT

☎ (AUS) 1800 623 432

MODEL: IPC-100 AC

PRODUCT CODE: 91838

12/2014

**3**

YEAR WARRANTY

As the router is, however, protected from internet access via *firewall* a separate access must be set up for the IP Security Camera. This is referred to as *Port forwarding*. The following installation steps are required to set up the IP Security Camera in the home network and via the internet:

1. The IP Security Camera must be connected to the router using the supplied network cable (see section 5.1. *Hardware Installation*).
2. Install the supplied software (see section 5.3. *Software installation*).
3. Set up IP Security Camera automatically or manually in home network:  
for Windows systems: See section 5.5. *Manual set up of IP Security Camera*.  
for Mac systems: See section 5.9. *Installation on Mac OS X*.
4. Where desired, a wireless connection can be set up between the IP Security Camera and the router using WiFi (see section 5.5. *Manual set up of IP Security Camera*).
5. Set up a Port forwarding in the router to allow access to the IP Security Camera via the internet (see section 5.6., *Router settings*).
6. Set up a fixed internet address (see section 5.7. *Setting up the domain name*).
7. Installation of Apps for smartphones and tablet PCs (see section 5.8. *Set up App*).
8. The standard set up of the IP Security Camera is described from section 5.4. onwards. Further information relating to the use and settings are provided from chapter 7 onwards.

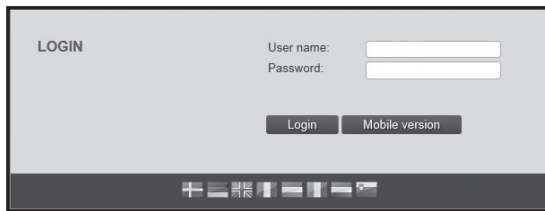
Ensure that the IP Security Camera is connected to the router via the network cable and is connected to the mains (see section 5.1., *Hardware Installation*). A network connection between the computer and the router must also exist. Open the program *Maginon IPCam Config*.

In the program select "**Start search**", to open a list of available IP Security Cameras.



From the list select the IP Security Camera to be set up or called up. This is also necessary if only one camera exists.

At the top of the menu click on "**browser**". The log on page of the IP Security Camera then appears in the window of the internet browser.



Select the desired language and then enter the following in the text window:

**User name:** *admin*

**Password:** Leave empty

Click on "Log on".

The viewing window of the IP Security Camera is displayed.



At the bottom of the window change to "Settings" and then to "Wireless settings" (🔊).

#### WIRELESS SETTINGS

|                      |                                     |
|----------------------|-------------------------------------|
| Use wireless LAN:    | <input checked="" type="checkbox"/> |
| Network name (SSID): | ip1test                             |
| Region:              | Europe (channel 1-13)               |
| Encryption:          | WPA2 PSK (AES)                      |
| Key (PSK):           | 1234567890                          |

Camera must be rebooted to copy the wireless settings.

**SAVE** **SCAN**

Select the region in which the IP Security Camera will be used from the "Region" option.

#### AFTER SALES SUPPORT

☎️ (AUS) 1800 623 432

MODEL: IPC-100 AC

PRODUCT CODE: 91838

12/2014

**3**

YEAR WARRANTY

In order to automatically search for the wireless network of your router, click on “Search” below the entries.

SCAN FOR WIRELESS NETWORKS

| BSSID             | SSID       | Mode           | Encryption     | Select                |
|-------------------|------------|----------------|----------------|-----------------------|
| 10:FE:ED:7B:2C:5C | TestTplink | Infrastructure | WPA2 PSK (AES) | <input type="radio"/> |
| 34:A8:4E:57:13:B0 | sukona     | Infrastructure | WPA2 PSK (AES) | <input type="radio"/> |
| C0:7B:BC:F1:A6:F0 | sukona     | Infrastructure | WPA2 PSK (AES) | <input type="radio"/> |

Unsupported network configurations cannot be selected.  
Camera must be rebooted to copy the wireless settings.

USE

SCAN AGAIN

Select the desired WiFi network from the list by marking it under “Selection” and click on “Use”. The settings then change back to Wireless settings.

Enter the wireless network key of your router under “PSK” or “Key”. This should be stored in your router documents.

Click on “Apply”, to accept the changed settings. Next, restart the IP Security Camera to accept the changes. The restart takes about 2 minutes.

You can now remove the network cable between the IP Security Camera and the router. Do, however, note that the IP Security Camera has a different local address through the wireless connection than when connected via the network cable. Once restarted, the IP Security Camera must be searched for using the program *Maginion IPCam Config* and opened through “browser” .

## 5.6. Setting up the router

The IP Security Camera is now set up in such a way that you can access it from your home network. You now have to set up your router in such a way that access from the internet is allowed. As in most cases, the router is protected against such access by a firewall, a separate access for the IP Security Camera must be opened in the router. If your router supports the function *UPnP*, access is set up automatically. As the option UPnP is activated in the IP Security Camera as a default setting, you can test in the following manner whether automatic set-up to the internet has been successful:

Open address <http://supracam.net/ip.aspx> in a browser window. The public IP address of your home network will be displayed. The software must be installed on a computer connected to the same home network as the IP Security Camera.

Enter the shown public IP address in the browser of a device that is *not* connected to the internet via your home network. Activation from the same network is generally not possible.

If the log on page of your IP Security Camera opens automatically, access for the IP Security Camera has been set up automatically in the router. You can then continue the installation with section 5.7., *Set up Domain name*.

Where automatic set up via the UPnP function is not possible, the respective access must be set up manually. This is referred to as *Port forwarding*. During this process, a single access is directly passed on to the IP Security Camera.

The below example shows the settings to be selected in the router to set up such an access. As the settings of the router can differ considerably, a general description cannot be provided at this point. Please check in the router documents how individual devices can access the router. This information can generally be found under "Port Forwarding".

We also have provided more detailed descriptions for different router models of how to set up Port forwarding. These descriptions can be found on internet page: <http://www.ipc-info.com>.

If your router is not listed, please contact our Service Hotline.

First start the configuration program of your router. For this you require the local network address of your router. You can check the local network connection by searching for the IP Security Camera in the program *Maginion IPCam Config* and then displaying the network settings using option "Address". Note down the address listed as „Standard gateway“.

Further information for activating the router can also be found in the Operating Instructions of your router.

For this, enter the local network address of your router in the browser and open the configuration menu. Next, open the Port forwarding menus in the Configuration menu.

In the below example, this can be found under “Applications & Games” as “Simple Port forwarding”.

| Application Name | External Port | Internal Port | Protocol | To IP Address | Enabled                             |
|------------------|---------------|---------------|----------|---------------|-------------------------------------|
| None             | ---           | ---           | ---      | 192.168.1.0   | <input type="checkbox"/>            |
| None             | ---           | ---           | ---      | 192.168.1.0   | <input type="checkbox"/>            |
| None             | ---           | ---           | ---      | 192.168.1.0   | <input type="checkbox"/>            |
| None             | ---           | ---           | ---      | 192.168.1.0   | <input type="checkbox"/>            |
| None             | ---           | ---           | ---      | 192.168.1.0   | <input type="checkbox"/>            |
| IPCamera1        | 81            | 81            | Both     | 192.168.1.110 | <input checked="" type="checkbox"/> |
| IPCamera2        | 82            | 82            | Both     | 192.168.1.111 | <input checked="" type="checkbox"/> |
|                  | 0             | 0             | Both     | 192.168.1.0   | <input type="checkbox"/>            |
|                  | 0             | 0             | Both     | 192.168.1.0   | <input type="checkbox"/>            |
|                  | 0             | 0             | Both     | 192.168.1.0   | <input type="checkbox"/>            |

In the provided example two IP Security Cameras are connected to the router, one camera with the name *IPCamera1* and the local network address 192.168.1.110, a second camera with the name *IPCamera2* and the local network address 192.168.1.111.

Only the external port 81 is set up for the IP Security Camera IPCamera1. TCP and UDP are the allowed protocols although only TCP is required. These cameras are accessed via the internet using address <http://xxx.xxx.xxx.xxx:81> (with xxx.xxx.xxx.xxx being the public IP address of the router).

|    |    |      |               |                                     |
|----|----|------|---------------|-------------------------------------|
| 81 | 81 | Both | 192.168.1.110 | <input checked="" type="checkbox"/> |
|----|----|------|---------------|-------------------------------------|

In order to avoid problems the same internal and external port of the IP Security Camera should be chosen. Activate the IP Security Camera again using the program “*Maginon IPCam Config*”. Under “Settings” change to “Network settings” and change the value under “Port” also to 81. Save the changes.

You should then be able to access the IP Security Camera via the camera as described at the beginning of this section.



### Note:

- Ensure that for every existing IP Security Camera a separate port is being used and that an external Port may not be assigned twice.

## AFTER SALES SUPPORT

1800 623 432

MODEL: IPC-100 AC

PRODUCT CODE: 91838

12/2014

# 3

YEAR WARRANTY



## 5.7. Setting up the domain name

On the internet, the IP Security Camera can be accessed through the public IP address of the router. As in many cases the public IP address of the internet access changes constantly, it is advantageous if the IP Security Camera can be accessed via a fixed address. For this purpose, a DDNS server (Dynamic Domain Name System) is available.

For free registration of a fixed internet address, open the page <http://supracam.net/> in your internet browser and select "Register" in the log on window,

First, enter a **user name**. This may only consist of small and capital letters, numbers or a hyphen. The user name is used for the internet address of the IP Security Camera. Enter, for instance, the user name "ipcamera" and, after registration, the IP Security Camera can be called up via address <http://ipcamera.supracam.net> as soon as it is connected to the internet. Enter another **password**, repeat it and then click on "Register".

The thus registered name must now also be entered in the IP Security Camera. In the settings of the IP Security Camera open point, "DDNS settings" and select "Use DDNS". Under **User name** and **Password** enter the same data used for registration.

Click on "Apply", to accept the changed settings. Next, restart the IP Security Camera to accept the changes. This operation takes around another 2 minutes.

The IP Security Camera is now reachable under the registered address.

## 5.8. Setting up an app

The app "Maginon IPC Viewer" is a program for accessing the IP Security Camera from your iPhone or Android smartphone. The App can be downloaded free of charge from the "App Store" and also from "Google Play".

Upon opening the App after installation, an empty window appears. Select "New" to set up the App for your IP Security Camera. The entry window opens showing the data required for the IP Security Camera as follows.

The following general information must be provided:

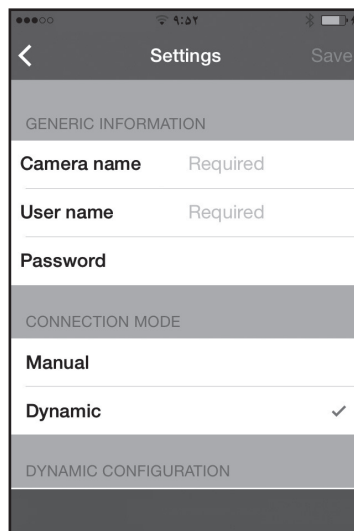
- **Name:** Enter any name for the IP Security Camera to be set up.
- **User name:** Enter "admin" as user name.
- **Password:** Leave password field blank.
- **Connection mode:** Select "Dynamic" as **connecting mode**.
- **Domain name:** Enter the fixed internet address specified under <http://supracam.net/>. If the IP Security Camera can, for instance be reached via <http://ipcamera.supracam.net/> you can enter "ipcamera" or also "ipcamera.supracam.net".

Select  to save the entries and return to the camera list.

In order to select the set up IP Security Camera for display or editing, touch the respective entry in the list on the display.

A preview with camera image, processing functions and information of the selected IP Security Camera opens.

In order to obtain a full-size view of the camera image, touch the image in Preview or select "Display". The Live image of the IP Security Camera is then shown as a full image.




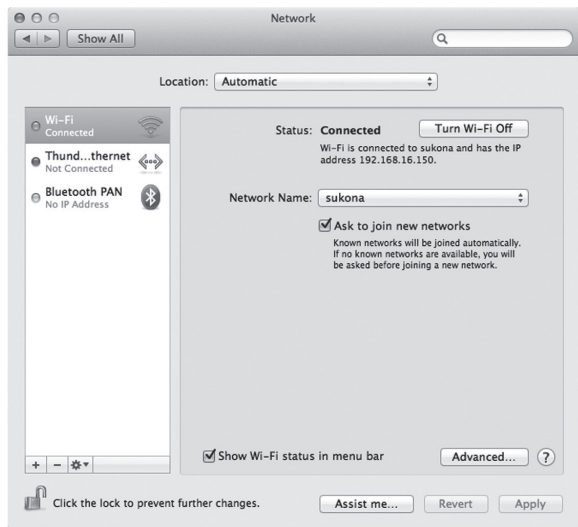
The screenshot shows the 'Settings' screen of the Maginon IPC Viewer app. At the top, there are back and save icons. The screen is divided into sections: 'GENERIC INFORMATION' containing 'Camera name', 'User name', and 'Password' (all marked 'Required'), and 'CONNECTION MODE' containing 'Manual' and 'Dynamic' (with 'Dynamic' selected). A 'DYNAMIC CONFIGURATION' section is visible at the bottom.

## 5.9. Installation on Mac OS X.

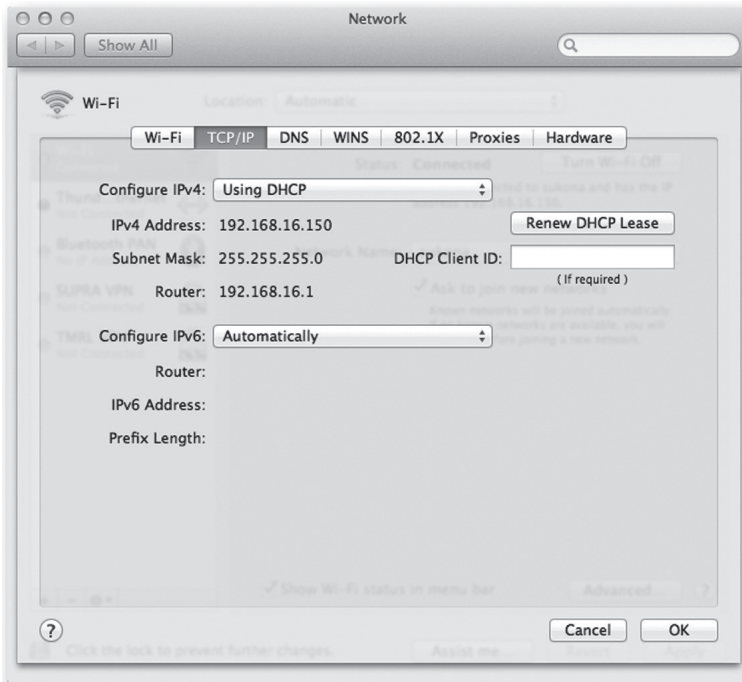
First install the IP Security Camera following the steps up to section 5.2. In order to be able to configure the IP Security Camera on your Mac OS X you first have to determine the IP address of your router. This IP address allows access to the configuration page of the router. Next, you require the IP address of the IP Security Camera from the settings data of the router. The configuration page of the IP Security Camera IPC-100 AC can be opened with this address and settings of the IP Security Camera can be entered.

### Determine IP address of your router.

In order to determine the IP address of the router on your Mac computer, click on the Apple symbol in the menu bar . Now click on "System settings" and then on "Network". Select the current network connection from the window. This is indicated by the preceding green point, in this case "Wi-Fi", click on "Further Options":



Change to page “TCP/IP” where you find the IP address of your router under “Router”. The address in the below example is 192.168.16.1.



## AFTER SALES SUPPORT

  1800 623 432

MODEL: IPC-100 AC

PRODUCT CODE: 91838

12/2014

# 3

YEAR WARRANTY

## Determine the IP address of the IP Security Camera

Open internet browser "Safari" and enter the previously determined IP address of the router. The configuration page of the router opens. Generally an option "DHCP table" or "DHCP reservation", can be found under Settings, which can be called up. You then receive a list of all devices in the network as shown in the below example.

Please note that the illustration of the configuration of your router can differ from the one in the example.

| Client Name         | Interface | IP Address    | MAC Address       | Select                   |
|---------------------|-----------|---------------|-------------------|--------------------------|
| Stefans-MacBook-Air | Wireless  | 192.168.1.130 | 14:10:9F:E3:BB:38 | <input type="checkbox"/> |
| ipcam_006E060241B6  | LAN       | 192.168.1.131 | 00:6E:06:02:41:B6 | <input type="checkbox"/> |

**Add Clients**

| Enter Client Name    | Assign IP Address | To This MAC Address |            |
|----------------------|-------------------|---------------------|------------|
| <input type="text"/> | 192.168.1.0       | 00:00:00:00:00:00   | <b>Add</b> |

| Client Name          | Assign IP Address    | To This MAC Address  | MAC Address          |
|----------------------|----------------------|----------------------|----------------------|
| <input type="text"/> | <input type="text"/> | <input type="text"/> | <input type="text"/> |

**Save Settings** **Cancel Changes** **Refresh** **Close**

In this list, the IP Security Camera can be found under the name "ipcam\_xxx". In the above example this would be "ipcam\_006E060241B6". Next to it is the local IP address of the IP Security Camera (here: 192.168.1.113). Enter it in a new window of the browser (Safari) in order to open the configuration page of the IP Security Camera.

Now continue the installation as specified in section 5.5., *Manual set up of IP Security Camera*.

## 5.10. Installation tips

Below, we have provided different information relating to the installation of the IP Security Camera in case of problems with the standard installation. For further information see page <http://www.ipc-info.com>.

### The program *Maginion IPCam Config* cannot find the camera.

Are IP Security Camera and computer connected to router?

If various wireless networks are active on the computer, deactivate the wireless networks to which the camera is not connected.

Deactivate the firewall of the computer.

### The router has no port for the network cable.

Connect the IP Security Camera directly to the computer.

1. Deactivate all networks on the computer.
2. Connect the IP Security Camera to the computer using the network cable.
3. Use program *Maginion IPCam Config* to search for the IP Security Camera.
4. Under Maginion IPCam Config select camera and then the "address"
5. Deactivate "DHCP" and enter under "Static configuration":
  - IP address 169.254.10.100; Subnet mask: 255.255.0.0
  - "Standard gateway" and "DNS Server" remain empty

Click on "Apply" and wait until the program shows the camera.

### The wireless connection between the IP Security Camera and the router is not working.

Check the wireless settings and in particular the entered code.

All WiFi channels may not be enabled. Adjust the "Region" setting when entering the Wireless settings.

Your router may allocate changing local IP addresses each time it connects. Search for the camera again using *Maginion IPCam Config*.

---

#### AFTER SALES SUPPORT

  1800 623 432

MODEL: IPC-100 AC

PRODUCT CODE: 91838

12/2014

**3**

YEAR WARRANTY

**Camera can be reached locally but not through the internet.**

This generally always occurs when Port forwarding is not or is incorrectly set up in the router. Read section 5.6., *Setting up the Router*, and information contained on internet page: <http://www.ipc-info.com>.

**internet connection via 3G/4G mobile phone networks.**

In case of an internet connection via a 3G/4G mobile phone network, no public IP address may be allocated to your internet access. In this case you have to apply to your internet provider to provide you with a public IP address.

Also, the option "Open internet" must be activated with the internet provider "Drei.at".

**Access via the public address is not possible from your own network.**

Generally it is not possible to call up the IP Security Camera via the internet from the same network the camera is connected to. This can only be done using the local network address.

---

**AFTER SALES SUPPORT**

  1800 623 432

MODEL: IPC-100 AC

PRODUCT CODE: 91838

12/2014

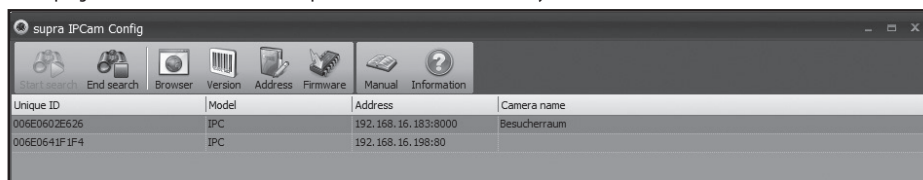


## 6. The program Maginon IPCam Config

Below we have provided a detailed description of the program *Maginon IPCam Config*, as installed in section 5.3., *Software Installation*.

Ensure that the IP Security Camera is connected to the router via the network cable and is connected to the mains (see section 5.1., *Hardware Installation*). A network connection between the computer and the router must also exist. Open the program *Maginon IPCam Config*.

In the program select **"Start search"**, to open a list of available IP Security Cameras.

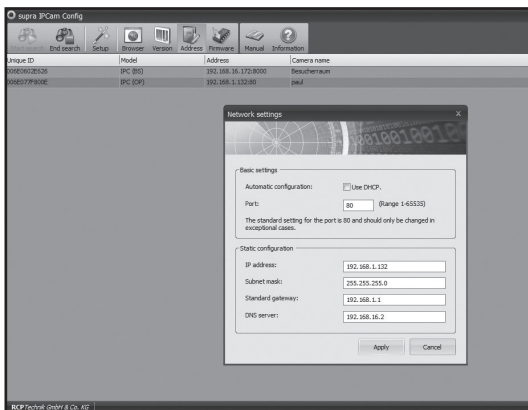


From the list select the IP Security Camera to be set up or called up. This is also necessary if only one camera exists.

After selecting the function **"Address"** the network data are displayed for the selected IP Security Camera.

The network setup for the camera is completed automatically provided that the option **"Use DHCP"** has been activated, the router supports DHCP and is also activated. If an address different to 0.0.0.0 appears under address, the automatic network setup of the IP Security Camera has been completed successfully.

To change the internal **Port** used by the IP Security Camera, enter the new port number. When using port forwarding, the external and internal port of the IP Security Camera should be the same.



You can, however, also manually specify the network data if the automatic configuration is not functioning. First deactivate **"Use DHCP"**. This opens the input fields for Static Configuration.

Under **Static Configuration** enter the network data for the IP Security Camera. These data are generally obtained via the



network settings of the computer or of the router.

Click on **"Apply"**, to accept the changed settings. You will be prompted to enter the user name and password of the Administrator. The default user account is "admin" without password.

To call up a IP Security Camera from the camera list ***Maginion IPCam Config*** in the browser window, click on **"browser"** in the menu. This opens the standard browser with the log-in page of the camera. You can then either call up the camera image or enter further settings for the camera.

Select menu option **"Version"** to obtain information about the selected IP Security Camera and the software.

Use option **"Firmware"** to automatically update the system firmware of the camera as well as the firmware for the Web interface.

First select **"Start search"** to search for existing IPC cameras. Select one of the cameras from the list and click on **"Firmware"**. The program then asks for the model of the selected camera. Select the model of the camera and confirm the selection by clicking on **"OK"**. The program then shows for the system and the Web interface what firmware version is installed and whether a newer version is available. If a newer Firmware version is available, this can be installed on your IPC camera by selecting **"Install"**. When prompted, enter the user name and password of an account with Administrator rights (the default setting is user "admin" without password) to complete the installation. The camera is restarted after a successful installation.

## 7. Use of IP Security Camera

### 7.1. Activating the IP Security Camera

First open your browser program (internet Explorer, Firefox, Opera, Google Chrome, Safari or similar). Next to it is the local IP address of the IP Security Camera. If you wish to access a IP Security Camera from a computer in the same network, you can also enter the local network address at this point.

Enter a User name and respective password to log on. Next click on **“Log on”**. When using the IP Security Camera for the first time enter **“admin”** as User name and leave password field empty.

This starts the operating and settings program of the IP Security Camera.



#### AFTER SALES SUPPORT

1800 623 432

MODEL: IPC-100 AC

PRODUCT CODE: 91838

12/2014

# 3

YEAR WARRANTY

## 7.2. Controlling the IP Security Camera

Various elements and options are available for controlling the camera. Below the camera image control elements directly controlling the alignment of the camera head, are provided as well as some basic camera settings.

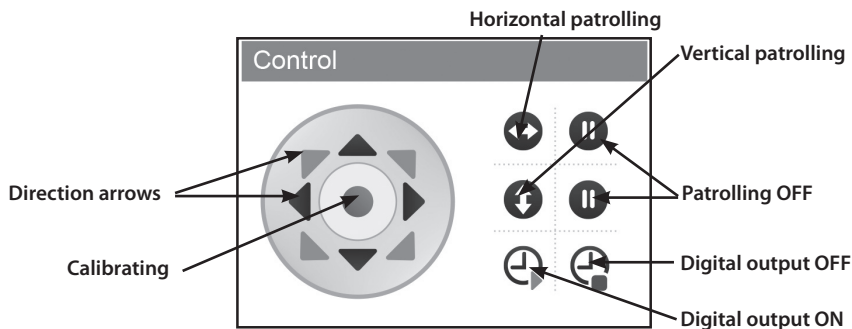
What operating elements are available and what settings may be changed depend on the level of access assigned to the user account.

*Administrators* can access all control elements and settings.

*Operators* can control the alignment of the camera head and can set up the camera image but not change any settings.

*Users* can only call up the camera image but not control the camera or change any settings.

### 7.2.1. Aligning the camera head



Using the **Direction arrows** the camera can be directly moved into the different directions. By keeping the mouse button depressed whilst pointing on a direction arrow the camera moves until the mouse button is released or the end stop of the chosen direction has been reached.

The center **Calibrating button**, serves to realign the camera head. Click on the button once and leave the mouse button on the button until the camera head no longer moves. A calibration should be carried out if the camera head has been moved manually, causing the stored positions to no longer work.

As soon as the IP Security Camera is connected to power, a calibration is automatically carried out.

#### AFTER SALES SUPPORT

☎ (AUS) 1800 623 432

MODEL: IPC-100 AC

PRODUCT CODE: 91838

12/2014

**3**

YEAR WARRANTY

Pressing the buttons **Horizontal patrolling** or **Vertical patrolling** starts an automatic pivoting of the camera in horizontal or vertical direction. The movement can be stopped by clicking on the respective buttons .


Further information about the speed of movement of the camera head can be found in section 8.12.

The control buttons can also be used to switch the digital input on or off.

## 7.2.2. Storing positions

The option “Positions” offers the facility to store up to 3 fixed positions of the camera head, which can then be called up at a later stage.



Click on button  of option 1, 2 or 3 to store the current camera position under this number. This deletes the position previously stored under the respective number.

Click on button  of option 1, 2 or 3 to move the camera head in the position stored under the respective number.

### 7.2.1. Camera image settings

Under View enter the settings for the camera image.

1. **Resolution:** This allows you to select whether the image of the IP Security Camera is shown in a resolution of 640 x 480 pixels or 320 x 240 pixels.
2. **Light frequency:** Where the IP Security Camera is used in a room with neon lights, set the network frequency for the local power grid (50 Hz or 60 Hz). Where the IP Security Camera is used externally, select External use.
3. **Brightness:** Specify a brightness value between 0 and 6. The higher the value, the brighter the camera image.
4. **Contrast:** Specify contrast value between 0 and 6. The higher the value, the higher in contrast the camera image.
5. **Mirror horizontally:** Select this option to mirror the camera image horizontally.
6. **Mirror vertically:** Select this option to mirror the camera image vertically.
7. **Sound on/off:** Here you can switch the sound of the security camera on or off. In order to use the sound function, the Adobe Flashplayer has to be installed on the operating net browser. It can be downloaded via <http://get.adobe.com/go/getflashplayer/>.

Horizontal and vertical mirroring of the camera image can, for instance be used when the IP Security Camera is ceiling mounted.

#### AFTER SALES SUPPORT

 1800 623 432

MODEL: IPC-100 AC

PRODUCT CODE: 91838

12/2014

**3**

YEAR WARRANTY

## 8. Settings

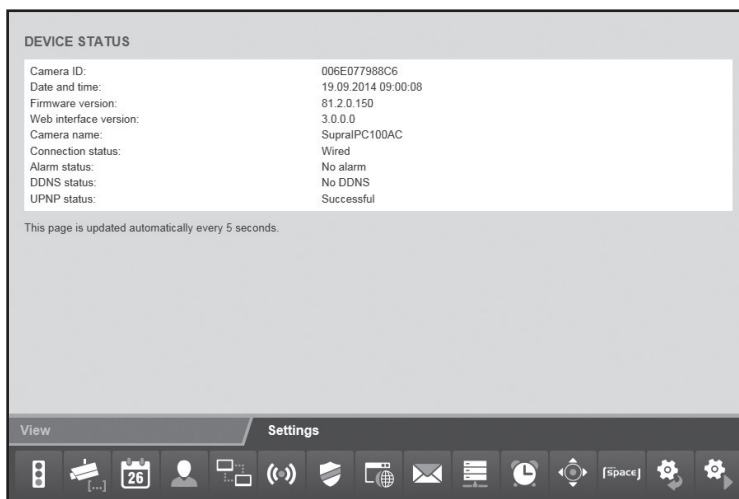
The below sections provide an overview of all possible options of the IP Security Camera. In case of problems during the installation or use or changing of the settings of the IP Security Camera, these sections contain information outlining the available options.

In your internet browser open access to the IP Security Camera (see section 6) and log on using a user account with administrator rights. The IP Security Camera is shipped with the user account “admin”, not requiring a password.

Once logged on select “Settings” and the respective desired Settings category.

### 8.1. Device status

The device status provides information about current data and settings values of the IP Security Camera. Select 1 from the below menu. Symbol “Device status”.



#### AFTER SALES SUPPORT

1800 623 432

MODEL: IPC-100 AC

PRODUCT CODE: 91838

12/2014

**3**

YEAR WARRANTY

## 8.2. Camera name

You can assign a name to the IP Security Camera in order to for instance make it easier to find in the network or to allow a clear assignment where several IP Security Cameras are used.

**CAMERA NAME**

Camera name:

Changes to camera names will be copied without rebooting the camera.

**SAVE**

**VIEW** **SETTINGS**

Icons: Phone, Camera, Calendar (26), Person, Network, Signal, Shield, Globe, Mail, List, Clock, Compass, Cloud, Gear, Gear.

Select 2nd symbol "Camera name" from the below menu. Enter the desired name for the IP Security Camera in the text field and click on "Save". The camera name can consist of any characters and can contain up to 20 characters.

The camera name is saved without having to restart the IP Security Camera.

## 8.3. Date and time

Set the time zone of the IP Security Camera and whether date and time should be automatically updated via a NTP server (Time server). The correct time is, for instance, required for planning alarms or FTP transfers.

DATE AND TIME

Current date and time:

11.09.2014 17:25:47

Time zone:

(GMT) Greenwich mean time; London, Lisbon, Casablanca

Daylight saving time:

☐

Synchronise with NTP server:

☒

NTP server:

time.nist.gov

time.nist.gov

time.windows.com

Date and time will be synchronized with local system on saving.

Changes to date and time will be copied without rebooting the camera.

SAVE

VIEW

SETTINGS

- Current date and time:** This option shows the date and time as it saved in the IP Security Camera. This data is synchronised with the settings of the local system during saving. Where the option “Synchronise with NTP Server” is not selected, the date and time can be set with this function.
- Time zone:** Select the time zone in which the IP Security Camera is located.
- Synchronise with NTP server:** Select this option if the date and time are to be automatically updated via a NTP server.
- NTP Server:** Select the NTP Server via which the date and time are to be updated from the specified list. You can also enter NTP servers by name or IP address that are not listed..

Click on “Apply” to accept the changed settings. The changes are saved without having to restart the IP Security Camera.



## 8.4. User account

You can set up anything up to 8 user accounts for the IP Security Camera. The IP Security Camera is then accessed via these user accounts.

The IP Security Camera is shipped with the user account “admin”, not requiring a password. This account can neither be removed nor can the authority “Administrator” be changed. Only a password can be determined.

Click on “Add” to create a new user account. Enter the user name for the new account and a password. User name and password can contain up to 12 characters. The password can also be left empty.

In order to delete a User account, click on “Delete” at the end of the line. Where a new User account has been accidentally deleted without having confirmed this by clicking on “Save”, you can select “User accounts” again to reinstate the account.

The following authorisations are available for a user account.

| User name | Password | Permissions   |
|-----------|----------|---------------|
| admin     |          | Administrator |

Camera must be rebooted to copy the user accounts.

SAVE ADD REMOVE

1. **Visitor:** can only call up the camera image but not control the camera or change any settings.
2. **Operator:** can control the alignment of the camera head and can set up the camera image but not change any settings.
3. **Administrator:** can access all control elements and settings.

Click on “Apply”, to accept the changed settings. The IP Security Camera is restarted to save the changes to the user account. The restart takes about 2 minutes.

## 8.5. Network settings

In order to connect the IP Security Camera to an existing network or a router, network settings must be entered.

### NETWORK SETTINGS

Use DHCP:

☐

IP address:

Subnet mask:

Standard gateway:

DNS server:

Web interface port:

80

Camera must be rebooted to copy the network settings.

SAVE

VIEW

SETTINGS

26

**Use DHCP:** If your network allows automatic addition of a new device (Client). select this option. All required data are obtained directly from the server or router.

**Port of Web user interface:** Connections in a network are made via Ports. Server and any connected device (Client) can operate via a different ports if the network address is identical.

A standard value of 80 is specified for the IP Security Camera. Where necessary this can be changed in the area 1-65535. The port of Web user interface should always be set to the same port as the external port of the IP Security Camera in the router. (see section 5.6. *Setting up the router*).

### AFTER SALES SUPPORT

  1800 623 432

MODEL: IPC-100 AC

PRODUCT CODE: 91838

12/2014

# 3

YEAR WARRANTY

Where automatic acceptance of new devices is not supported by your router, please deselect "Use DHCP".

Several ne input fields appear. Manually enter the access data of your network.

The required data can generally be called up from the computer via the network properties or can be obtained from the System Administrator of the network.

- **IP address:** Enter an individual network address for the IP Security Camera.

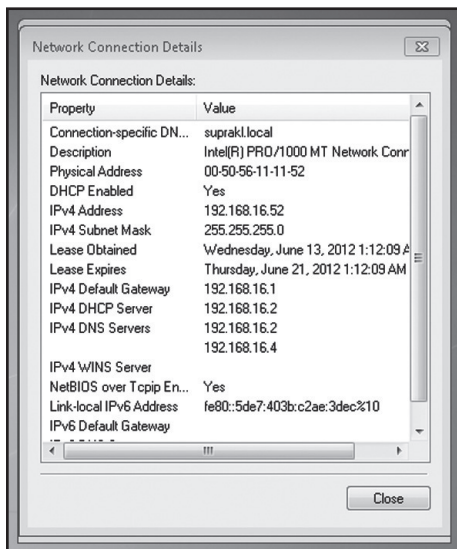
If, for instance, the network setting of the computer for "Default Gateway" (Standard gateway) is address 192.168.1.1, the address of the IP Security Camera must be 192.168.1.x. x represents a value between 2 and 254 not as yet used in the network. Example: 192.168.1.100.

- **Subnet mask:** Generally, the value 255.255.255.0 must be specified.

- **Standard gateway:** Connection to standard gateway is used for connecting to the internet. Generally this is the network address of the router.

- **DNS Server:** The address of the DNS or name server can be called up from the network settings of your computer. Generally this is the network address of the router.

Click on "Apply" to accept the changed settings. You have to restart the IP Security Camera before the changes are saved in the network settings.



## 8.6. Wireless settings

If the IP Security Camera is to be connected to a network using the wireless option WiFi, the required settings can be entered under this option. Select option "Wireless settings" from the bottom of the menu.

- **Use WiFi:** Select this option if a wireless connection to the network is to be used. The configuration page of the router opens.

**MAGINON** IPC-100AC  
19.09.2014 | 08:51:40

**supra**  
**[space]**  
SERVICE & RESOURCE PLATFORM

**WIRELESS SETTINGS**

Use wireless LAN: ☒

Network name (SSID):

Region:

Encryption:

Key (PSK):

Camera must be rebooted to copy the wireless settings.

**SAVE** **SCAN**

All data required for the used wireless network are stored in the router or Access Point through which the network is controlled. Select the router or access point settings and open the wireless network settings. Further information of how you can find this data is provided in the manual of your router or is available from your System Administrator.

- **Network name (SSID):** Enter the name of your wireless network (also referred to as SSID).

- **Region:** Depending on the region, WiFi does not support various channels. Select the region in which the IP Security Camera will be used from the "Region" option.
- **Encoding:** Data in wireless networks are in most cases transmitted encoded to prevent third party access. State what type of encoding is used in your WiFi network.

When "**Uncoded**" is selected, data are not encoded prior to transmission.

When using "**WEP**", "**WPA**" or "**WPA2**" encoding, additional encoding information must be provided. Enter the same settings as shown for the router or access point.

**Note:**

- Enter wireless network settings without changing. This is the only way to ensure the correct connection of the IP Security Camera.
- Also, general settings of the router or access points should not be changed where this is not required. Otherwise this could result in problems with other WiFi devices in the network.

Use the "Search" function to start an automatic search of existing wireless networks. Select the desired WiFi network from the list by marking it under "Selection" and click on "Use". Where encoding data is required for the selected network, these must still be entered.

Click on "Apply" to accept the changed settings. Next, restart the IP Security Camera to accept the wireless settings changes. The restart takes about 2 minutes.

**AFTER SALES SUPPORT**

  1800 623 432

MODEL: IPC-100 AC

PRODUCT CODE: 91838

12/2014

**3**

YEAR WARRANTY

## 8.7. UPNP settings



### Note:

- These settings are only of importance where manual installation was selected. When using supra space, no further settings have to be entered.

Universal Plug and Play (UPnP) is used for controlling devices via an IP-based network. Where the router supports UPnP and where this function is activated, the required firewall settings are automatically selected.

Select option “UPNP settings” from the bottom of the menu.

UPNP SETTINGS

Use UPNP:

☒

Changes to the UPNP settings will be copied without rebooting the camera.

SAVE

VIEW

SETTINGS

Select “Use UPNP”, if UPNP is to be used for the connection of the IP Security Camera. “Use UPNP” is set as default.

Click on “Apply”, to accept the changed settings. The changes are saved without having to restart the IP Security Camera.

### AFTER SALES SUPPORT

1800 623 432

MODEL: IPC-100 AC

PRODUCT CODE: 91838

12/2014

# 3

YEAR WARRANTY

## 8.8. DDNS settings



### Note:

- These settings are only of importance where manual installation was selected. When using supra space, no further settings have to be entered.

On the internet, the IP Security Camera can be accessed through the IP address of the router or server. As in many cases the public IP address of the internet access changes constantly, it is advantageous if the IP Security Camera can be accessed via a fixed address. For this purpose, a DDNS server (Dynamic Domain Name System) is available through which a fixed address can be set up for the IP Security Camera.

For free registration of a fixed internet address, open the page <http://supracam.net/> in your internet browser.

Next, select "Register" from the log on window.

First, enter a **user name**. This may only consist of small and capital letters, numbers or a hyphen. The user name is used for the internet address of the IP Security Camera. Enter, for instance, the user name "ipcamera" and, after registration, the IP Security Camera can be called up via address <http://ipcamera.supracam.net> as soon as it is connected to the internet. After successful registration, the following adjacent information is provided.

| DynamicDNS Overview  |                |                     |
|--|----------------|---------------------|
| <b>Redirects</b>   |                |                     |
| The following domains are registered on this user account. |                |                     |
| Domain   | Redirecting to | Last update         |
| ipcamera1.supracam.net                                     | 172.169.28.15  | 15.03.2013 09:15:12 |
| <b>Log-off</b>   |                |                     |
| To log-off please click here .                             |                |                     |

Change to DDNS settings of the IP Security Camera and select "Use DDNS".

### DDNS SETTINGS

Use DDNS:

☒

User name:

Password:

Domain name:

supracam.net

You can register for this service free of charge at <http://supracam.net/>. Camera must be rebooted to copy the DDNS settings.

Save

View

Settings

Under **User name** and **Password** enter the same data used for registration via the DDNS Server. Also enter the User name specified during registration in the text field "**Domain name**".

Click on "**Apply**", to accept the changed settings. Next, restart the IP Security Camera to accept the DDNS settings changes. The restart takes about 2 minutes.



## 8.9. Mail settings

In certain circumstances, the IP Security Camera can send out a alarm message by email. For this purpose an email account must be specified from which emails will be sent out. A private email address can, for instance, be used or you can set up a separate email address for the IP Security Camera.

Select option "Mail settings" from the bottom of the menu and select "Use SMTP".

Activate "Use SMTP", if an email is to be sent out in the event of an alarm. Please note that the alarm must be activated under alarm settings.

The data required as regards the used email account will be provided by the email provider. For your private email account you can also find this data in email programs such as Outlook or Thunderbird.

The *SMTP Server* (Simple Mail Transfer Protocol) is a post output server of an email provider. Emails are sent to this server for forwarding.

- **Server:** Enter address of SMTP server of email account.
- **Port:** Enter port of SMTP server. The standard value is 25.
- **Encoding:** State the encoding used by the SMTP server.

**Requires authentication:** State whether the SMTP server requires authentication. If yes, mark this option and state the **user name** and **password** of the email account.

- **Sender:** State email address via which an alarm message is to be sent.
- **Recipient 1-4:** Provide up to 4 email addresses via which an alarm message is to be sent. If you want to a message to be sent to the email address, sending out the alarm messages, you have to enter the address also as recipient.
- **Send IP address:** This option allows you to determine whether an email will be sent with the current IP address of the IP Security Camera to the listed email addresses as soon as the IP address of the IP Security Camera changes.

Fields “**Server**”, “**Port**”, “**Sender**” and “**Recipient1**” are mandatory fields.

Click on “**Test**”, to test the email settings. A test email is then sent to the listed email addresses.

Click on “**Apply**”, to accept the changed settings. The changes are saved without having to restart the IP Security Camera.

## 8.10.FTP settings

The IP Security Camera offers the option to upload images to an FTP server once or regularly. Specify the required additional data for an FTP server to be used.

Select option “FTP settings” from the bottom of the menu and select “Use FT”.

**FTP SETTINGS**

Use FTP: ☒

Server:

Port:

User name:

Password:

Path:

Transmission mode:

Upload in interval: ☒

Interval (seconds):

Give file name: ☒

File name:

Changes to the FTP settings will be copied without rebooting the camera.

**VIEW** **SETTINGS**

Icons: Home, Calendar (26), User, Network, Security, Mail, Settings, etc.

Activate “Use FTP”, if images of the IP Security Camera are to be uploaded to an FTP server.

- **Server:** Enter address of FTP server.
- **Port:** Enter the port used for FTP server access. The standard value is 21.
- **User name:** Enter the name of a user account entitled to write to the FTP Server.
- **Password:** Enter password for User account.
- **Path:** Enter the path under which images are to be stored on the FTP server.
- **Transfer mode:** Select whether a passive or active FTP connection is to be requested for the transfer.
- **Upload in interval:** Select this option if you wish images of the IP Security Camera to be uploaded to the FTP server at regular intervals.

- **Interval (seconds):** Specify at what intervals an image is to be taken and transferred. Values are in seconds.
- **Enter file name:** Select this option if you wish to specify a file name. If this option has not been selected, a predefined file name will be used when saving the images.
- **File name:** Enter your own file name. A sequential number is assigned to the specified name during saving of the images.

To test entries for the FTP settings, click on **"Test"**. A single image is the transferred to the FTP server.

Click on **"Apply"**, to accept the changed settings. The changes to the FTP settings are saved without having to restart the IP Security Camera.

## 8.11. Alarm settings

Specify under which circumstances the IP Security Camera should issue an alarm message and what should be done in the event of an alarm. Select option **"Alarm settings"** from the bottom of the menu. Depending on the set options, the following will be displayed:

ALARM SETTINGS

Motion detection:

☒

Sensitivity:

5

Use schedule:

☒

Schedule setting:

Change

Detect at digital input:

☒

Alarm level:

High

Report at digital output:

☒

Alarm level:

High

Report at e-mail:

☐

Report at FTP:

☐

Report at HTTP:

☐

Changes to the alarm settings will be copied without rebooting the camera.

SAVE

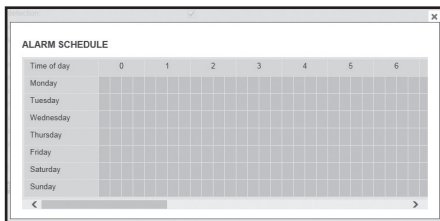
VIEW

SETTINGS

- **Motion detection:** Select this option to activate motion detection.

- **Use time schedule:** You can restrict the period of time during which alarms can be triggered. As soon as this option is selected, the adjacent time schedule appears, in which the active times can be selected. Select the times during which the alarm settings should be active.
- **Sensitivity:** Enter the sensitivity for movement sensing using a value between 0 and 9. The higher the value, the higher the movement sensing sensitivity.
- **Recognition at digital input:** If an alarm message is triggered via the alarm connection, this can be accepted by the IP Security Camera if this option has been activated.
- **Alarm level:** Determines whether an alarm is triggered if no voltage is applied to the alarm input (setting low) or if voltage is applied (setting high).
- **Report at digital output:** Any alarm message at the IP Security Camera is forwarded via the digital output if this option has been activated.
- **Alarm level:** Determine whether the alarm is triggered at the digital output by an applied voltage (setting high) or by a cessation of the voltage (setting low).
- **Report to email:** Activate this option if an email is to be sent out in the event of an alarm.
- **Report to FTP:** Activate this option if images are to be stored on the FTP server in the event of an alarm.
- **Interval:** Activate this option if images are to be stored on the FTP server in the event of an alarm. Values are in seconds.
- **Report to FTP:** Activate this option if an HTTP address is to be called up in the event of an alarm.
- **URL:** State the HTTP address to be called up in the event of an alarm.

Click on **"Apply"**, to accept the changed settings. The changes to the alarm settings are saved without having to restart the IP Security Camera.



The alarm connection to the rear of the IP Security Camera contains 4 connections:

1. Alarm output (GND)
2. Alarm output (+5V)
3. Alarm input (Source)
4. Alarm input (GND)



An external device such as an alarm unit, a siren or a door opener can be connected to the alarm output (1 and 2). A signal is emitted as soon as the digital output is switched on manually or where the digital output has been selected for alarm messages and the IP Security Camera detects an alarm.

An alarm is triggered if the contacts of alarm input (3 and 4) are externally connected to each other. A connection can be produced via a switch or relay, such as a motion sensor or other alarm triggering devices. If an alarm signal has been applied, a signal is emitted according to the above settings.

## AFTER SALES SUPPORT

  1800 623 432

MODEL: IPC-100 AC

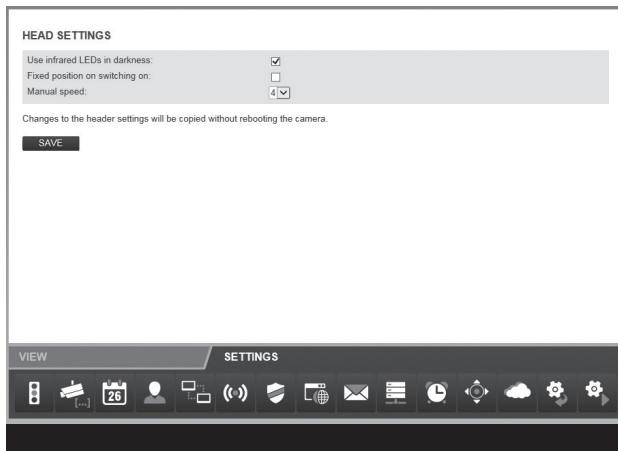
PRODUCT CODE: 91838

12/2014



## 8.12. Camera head settings

In this category, settings for the positioning of the camera head can be entered.



- **Use infrared LEDs in dark conditions:** If this option has been activated, the infrared LEDs are used as an additional light source in dark conditions.
- **Fixed position during switch on:** Activate this option if the camera head should take up a predetermined position when the IP Security Camera is switched on.
- **Position during switch on:** Determine the position the camera head should take up. Select Centre if the camera head is to be centred or select one of the positions saved in the camera view (see section 7.2.2).
- **Manual speed:** Determine how quickly the camera head should move if controlled manually. The higher the value the slower the movement of the head.
- **Automatic speeds:** Determine how quickly the camera head is to move upwards, downwards, left and right during automatic operation. The higher the value, the slower the movement of the head.

Click on "Save" to accept changes to the settings. Changes to the camera head settings are accepted without the IP Security Camera having to be restarted.

### AFTER SALES SUPPORT

☎ (AUS) 1800 623 432

MODEL: IPC-100 AC

PRODUCT CODE: 91838

12/2014

**3**

YEAR WARRANTY

## 8.13.Resetting

Click on **"Reset now"** to reset the IP Security Camera to the default settings.

Resetting takes 2 minutes. Wait until the browser window shows the logging on option again.



### Note:

- Selection of this function deletes all previous settings.
- If the network settings have been changed, the IP Security Camera may no longer be attainable under the current address. The IP Security Camera can be found again using the configuration program.
- The IP Security Camera can also be reset by pressing the RESET button underneath the camera. Keep RESET button depressed for 15 seconds.

## 8.14.Restarting the camera

Click on **"Restart now"** to restart the IP Security Camera. This saves all entered settings.

Restarting takes 2 minutes. Wait until the browser window shows the logging on option again.



### Note:

- If the network settings have been changed, the IP Security Camera may no longer be attainable under the current address. The IP Security Camera can be found again using the configuration program.

### AFTER SALES SUPPORT

  1800 623 432

MODEL: IPC-100 AC

PRODUCT CODE: 91838

12/2014

**3**

YEAR WARRANTY



## 9. Potential legal infringements

Observe the following information for using the IP Security Camera:

### Copyright

Generally every person owns his/her own image. According to the copyright law, images may only be published without the consent of the respective person if the person appears only as a person embellishment to a landscape image, or a location as a public place. The answer to the question of whether a person is embellished depends on the individual circumstances. For reasons of legal certainty persons should be informed in all cases in which images are taken with the IP Security Camera from which persons can be identified (see also section "Duty of notification").

### Protection of privacy

Shown images may not infringe the privacy of others. Do not point camera onto the garden or entrance door of your neighbour, even if these locations are visible from your known home or public locations. This does not entitle you to publish respective photos or videos.

### Personal determinability

Personal determinability exists, where it can be determined that a certain person was at a certain place at a certain time. The person can also be identified by a personal identifier such as a vehicle registration plate. Personal determinability of persons must be absolutely avoided.

### IP Security Cameras at the place of work

Surveillance of workplaces is subject to particular strict regulations in Australia. Employers should not use IP Security Cameras at the place of work unless potential legal infringements can be fully excluded.

### Traffic IP Security Cameras

When using IP Security Cameras facing traffic, it is recommended to configure the location and view of the camera in such a way that road users are identifiable from any images through a vehicle registration plate. Road users could also be determined from lettering on vehicles.

---

#### AFTER SALES SUPPORT

  1800 623 432

MODEL: IPC-100 AC

PRODUCT CODE: 91838

12/2014



## Duty of notification

Where a personal identification of persons cannot be excluded, a clearly visible notice concerning the IP Security Camera must be erected at all accesses to the monitored area. Passers-by must also be informed that by entering the monitored area they give their permission to pictures/videos being taken so that if they do not wish to give their consent they can avoid the picture/video being taken by not accessing the area. The voluntary nature of the declaration must be observed. If the camera trap is located at a point persons have to pass to reach their destination (e.g. entrance of a sight), no consent is deemed to have been given as no voluntary nature applies.

## 10. License declaration

The software used by this product is licensed under a license governed by the conditions of GNU – General Public License. We expressly point out that for software based on the license conditions of the GNU - General Public License, no liability is accepted.

The software is based on the software published on page.

**<http://sg-gpl.net/>**

The listed software is licensed according to the conditions of GNU – General Public License.

For the product software adjustments specific to the device were made. The source text of the software implemented in this product will be forwarded by email.

**[info@supra-elektronik.com](mailto:info@supra-elektronik.com)**

In this case, your email must contain information stating the product, serial number, proof of commercial purchase source and proof of purchase date of product from a commercial source.

We guaranty that the source text of the implemented software will be forwarded for a period of at least three years from the date of purchase, provided that the commercial source has obtained the product directly from us or with the involvement of only commercial agents.

---

### AFTER SALES SUPPORT

  1800 623 432

MODEL: IPC-100 AC

PRODUCT CODE: 91838

12/2014



## 11. Conformity

The Manufacturer hereby declares that the CE marking was applied to the product in accordance with the basic requirements and other relevant provisions of the following European Directives:

2011/65/EC RoHS Guideline

2004/108/EC Low Voltage Directive

1999/5/EG R&TTE Guideline

The EC Declaration of Conformity can be requested from the address specified on the Warranty card.



## 12. Disposal

Correct disposal of product:

The adjacent symbol indicates that electrical and electronic equipment may not be disposed of in domestic waste in the EU. Please use the returns and collection points of your local council or contact your dealer you purchased the product from.

This prevents potentially harmful effects on the environment and health as a result of incorrect disposal.

For further information contact the respective department of your local council.



## 13. Warranty and Service

Our service outlets will be happy to assist you in case of problems with the operation of the device or with any queries and problems. The device comes with a 3 year manufacturer's warranty. Please see the enclosed Warranty Card for details.

Please contact our hotline prior to returning a defective device.

### Service address:

QSL

MAGINON Service

Rear Unit 11, Slough Business Park,

2 Slough Avenue, (off Rachael Close)

Silverwater, NSW 2128

Australia

**Tel.: 1800 623 432**

### Manufacturer's address:

**supra**

Foto-Elektronik-Vertriebs-GmbH

Denisstr. 28A

67663 Kaiserslautern

Germany

---

### AFTER SALES SUPPORT

 1800 623 432



MODEL: IPC-100 AC

PRODUCT CODE: 91838

12/2014



## 14. Technical specification

|                                 |  |
|---------------------------------|--|
| Model                           | IP Security Camera IPC-100 AC  |
| Image sensor                    | 1/5" Megapixels CMOS sensor  |
| Lens                            | F=2.4, f=3.6 mm, Infrared lens   |
| Infrared light                  | 9 Infrared LEDs  |
| Night vision                    | 15 m   |
| Minimum lighting                | 0.5 Lux (w/o LEDs)   |
| Angle of view                   | 60°  |
| Supported protocols             | HTTP, FTP, TCP/IP, SMTP, DHCP, DDNS, UPnP  |
| WiFi standards                  | IEEE 802.11 b/g/n  |
| LAN connection                  | 10/100 Mbit/s RJ-45  |
| Power supply                    | AC adapter: Baolijin BLJ15W050200P-S<br>Input: 100 - 240 V~, 50/60 Hz; 500 mA max.<br>Output: 5 V  , 2000 mA<br>Camera: 5 V  DC, 2,0 A |
| Connections                     | LAN: Input/output alarm (output max. load 100 mA)  |
| Permissible ambient temperature | 0°C to +35 °C  |
| Ambient humidity                | 20 - 85%   |
| Dimensions (HxWxD)              | 95 mm (H) x 100 mm (B) x 120 mm (T)  |
| Weight                          | approx. 238 g  |



### Note:

- We reserve the right to make technical and optical changes to the product as part of product improvements.

### AFTER SALES SUPPORT

  1800 623 432

MODEL: IPC-100 AC

PRODUCT CODE: 91838

12/2014

**3**

YEAR WARRANTY

## 15. Index

### A

Accessories 1  
Address 30  
Administrator 39  
Administrators 33  
Alarm connection 52  
Alarm connection (In/Out) 7  
Alarm message 47  
Alarm settings 50  
Alarm terminal 6  
Angle of view 58  
App 15  
Assembly of IP Security Camera 8

### B

Brightness 35

### C

Calibrating button 33  
Camera head 33  
Camera head 53  
Camera image 35  
Camera name 37  
Cloud installation 11  
Conformity 57  
Contrast 35  
Controls 33

### D

Date 38  
DDNS server 23  
DDNS settings 23  
Device status 36

### DHCP

40  
Direction arrows 33  
Disposal 57  
DNS Server 41  
Domain name: 46

### E

Encoding 43

### F

firewall 17  
Firmware 31  
Focus ring 7  
FTP settings 49

### H

Hardware installation 9  
Hazard 4

### I

Image sensor 58  
Infrared LED 7  
Installation on Mac OS X. 25  
Install wall fixing 8  
Intended use 4  
IP address 16, 41

### L

LAN cable 6  
Legal regulations 55  
License declaration 56  
Light frequency 35  
Log on 32

#### AFTER SALES SUPPORT

  1800 623 432

MODEL: IPC-100 AC

PRODUCT CODE: 91838

12/2014

# 3

YEAR WARRANTY

**M**

Mail settings 47  
Maginon IPCam Config 30  
Manual set up 16  
Manual speed: 53  
Microphone 7  
Mirror 35  
Motion sensing 50

**N**

Network cable 9  
Network connection (LAN) 7  
Network name 42  
Network settings 40  
NTP Server 38

**O**

Operator 39

**P**

Port 30, 40  
Port forwarding 17, 21  
Power supply connection (DC 5V) 7  
Protocols 58

**R**

Region 43  
Reset button 7  
Resetting 54  
Resolution 35  
Router 16, 20, 25

**S**

Sensitivity 51  
Service 57

**Settings 36**

Setting up an app 24  
Setting up the domain name 23  
SMTP 47  
Software installation 10  
Speed of movement 34  
Standard gateway 21, 41  
Subnet mask 41  
Supra space 11, 14, 15  
System requirements 10

**T**

Technical specification 58  
Time 38  
Time schedule 51  
Time zone 38

**U**

UPNP 44  
Use DHCP 30  
User account 39  
User data 2  
Users 33

**V**

Visitor 39

**W**

Wall fixing 6  
Warranty 57  
Wireless settings 19, 42  
WiFi aerial 7  
WiFi settings 42

**AFTER SALES SUPPORT**

  1800 623 432

MODEL: IPC-100 AC

PRODUCT CODE: 91838

12/2014

**3**

YEAR WARRANTY

# MAGINON

## IP Security Camera

### Repair and Refurbished Goods or Parts Notice

---

Unfortunately, from time to time, faulty products are manufactured which need to be returned to the Supplier for repair.

Please be aware that if your product is capable of retaining user-generated data (such as files stored on a computer hard drive, telephone numbers stored on a mobile telephone, songs stored on a portable media player, games saved on a games console or files stored on a USB memory stick) during the process of repair, some or all of your stored data may be lost.

**We recommend you save this data elsewhere prior to sending the product for repair.**

You should also be aware that rather than repairing goods, we may replace them with refurbished goods of the same type or use refurbished parts in the repair process.

**Please be assured though, refurbished parts or replacements are only used where they meet ALDI's stringent quality specifications.**

If at any time you feel your repair is being handled unsatisfactorily, you may escalate your complaint. Please telephone us on SUPPLIER TELEPHONE or write to us at:

**supra**

Foto-Elektronik-Vertriebs-GmbH

Denisstr. 28A

67663 Kaiserslautern

Germany

**After Sales Support: 1800 623 432**

**(Operating Hours: Mon-Fri 08:00AM to 06:00PM EST)**

---

#### AFTER SALES SUPPORT

  1800 623 432

MODEL: IPC-100 AC

PRODUCT CODE: 91838

12/2014





# MAGINON

**supra**

Foto-Elektronik-Vertriebs-GmbH  
Denisstr. 28A  
67663 Kaiserslautern  
Germany

91838  
12/2014  
2001 8177